

# MaxTester 730C PON/metro OTDR

OPTIMIZED FOR FTTx/MDU FIBER DEPLOYMENTS AND TROUBLESHOOTING, SUITABLE FOR METRO



Fully featured, entry-level, dedicated OTDR with tablet-inspired design, suitable for metro and optimized to test through optical splitters, for seamless end-to-end FTTH characterization and troubleshooting.



## KEY FEATURES

- Handy, lightweight, powerful, tablet-inspired design
- Rugged design built for outside plant
- 7-inch, outdoor-enhanced touchscreen—the biggest in the handheld industry
- 12-hour battery life
- Tamper-proof password protection
- Dynamic range up to 39 dB for up to 132 km point-to-point (P2P)
- Short dead zones: event dead zone (EDZ) = 0.5 m; attenuation dead zone (ADZ) = 2.5 m; PON dead zone = 30 m
- Single port for in-service troubleshooting with in-line 1490/1550 nm PON power meter (optional)
- Supports high port count PON splitters (up to 1x128)
- iOLM-ready: one-touch multiple acquisitions, with clear go/no-go results presented in a straightforward visual format
- Market-leading onboard PDF reporting solution and essential PC-based post-processing included for all users
- Live fiber testing at 1625 nm or 1650 nm

## APPLICATIONS

- FTTx/PON testing through splitters
- Access network testing (P2P)
- Metro links testing (P2P)
- Live fiber troubleshooting
- Passive optical LAN (POL)

## COMPLEMENTARY PRODUCTS AND OPTIONS



Fiber inspection scope FIP-400B (WiFi or USB)

## FastReporter

Advanced data post-processing software FastReporter



Soft pulse suppressor bag SPSB

## THE HANDHELD OTDR... REINVENTED.

The MaxTester 700B/C Series is the first tablet-inspired OTDR line that is handy, lightweight and rugged enough for any outside plant environment. With a 7-inch, outdoor-enhanced touchscreen—the most efficient handheld display in the industry—it delivers an unprecedented user experience. Its intuitive Windows-like GUI ensures a fast learning curve. Plus, its new and improved OTDR 2 environment offers icon-based functions, instant boot-up, automatic macrobend finders as well as improved auto and real-time modes.

The MaxTester 700B/C Series is a line of genuine high-performance OTDRs from the world's leading manufacturer. It delivers EXFO's tried and true OTDR quality and accuracy along with the best optical performance for right-first-time results, every time.

The amazing 12-hour battery life will never let a technician down, and the plug-and-play hardware options, like the VFL, power meter and USB tools, make every technician's job easier.

Most importantly, the MaxTester 700B/C Series is finally bringing the intelligent Optical Link Mapper (iOLM), an intelligent OTDR-based application, to the handheld market. This advanced software turns even the most complex trace analysis into a simple, one-touch task.

Ultimately, the MaxTester 700B/C Series is small enough to fit in your hand and big enough to fit all your needs!

## THE ENTRY-LEVEL SOLUTION DESIGNED FOR ALL YOUR TESTING NEEDS

The MaxTester 730C PON/metro OTDR is optimized to test through optical splitters up to 1x128, ensuring complete end-to-end FTTH characterization. The 1625-nm or 1650-nm, out-of-band, live testing port enables the efficient troubleshooting of active networks without affecting the signal of other clients. Plus, the high dynamic range makes it suitable for metro P2P testing.

Other models available:

- MaxTester 715B short access and FTTH last-mile installation and troubleshooting
- MaxTester 720C LAN/WAN access OTDR—optimized for multimode and singlemode access network construction and troubleshooting

## SECURE YOUR INVESTMENT AGAINST THEFT

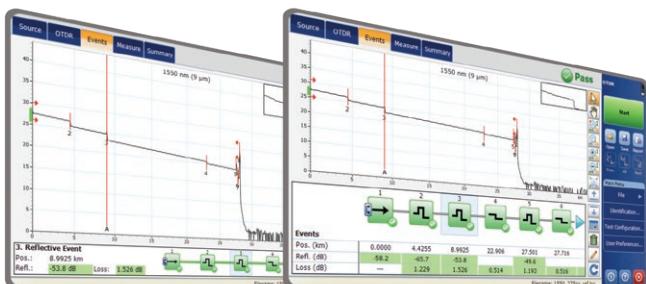
Protected instruments have no value on the black market making them completely unappealing to thieves. With our security management option, administrators can define and load a tamper-proof security profile on the MaxTester, displaying a property message on the home screen and securing it with a user password (permanent or renewable).



## LOOKING FOR ICON-BASED MAPPING?

### Linear view (included on all EXFO OTDRs)

Available on our OTDRs since 2006, the linear view simplifies the reading of an OTDR trace by displaying icons in a linear way for each wavelength. This view converts the graph data points obtained from a traditional single pulse trace into reflective, non-reflective or splitter icons. With applied pass/fail thresholds, it becomes easier to pinpoint faults on your link.



This improved linear view offers you the flexibility to display both the OTDR graph and its linear view without having to perform a toggle to analyze your fiber link.

Although this linear view simplifies OTDR interpretation of a single pulse-width trace, the user must still set the OTDR parameters. In addition, multiple traces must often be performed in order to fully characterize the fiber links. See the section below to learn about how the iOLM can perform this automatically and with more accurate results.

### iOLM—REMOVING THE COMPLEXITY FROM OTDR TESTING

OTDR testing comes with its load of challenges...



**WRONG OTDR TRACES**



**COUNTLESS TRACES TO ANALYZE**



**REPEATING THE SAME JOB TWICE**



**COMPLEX INSTRUMENT TRAINING/SUPPORT**

**In response to these challenges, EXFO developed a better way to test fiber optics:** The iOLM is an OTDR-based application designed to simplify OTDR testing by eliminating the need to configure parameters, and/or analyze and interpret multiple complex OTDR traces. Its advanced algorithms dynamically define the testing parameters, as well as the number of acquisitions that best fit the network under test. By correlating multipulse widths on multiple wavelengths, the iOLM locates and identifies faults with maximum resolution—all at the push of a single button.

#### How does it work?



Turning traditional OTDR testing into clear, automated, first-time-right results for technicians of any skill level.


#### Three ways to benefit from the iOLM

**COMBO**




Run both iOLM and OTDR applications (Oi code)

**UPGRADE**



Add the iOLM software option to your iOLM-ready unit, even while in the field

**iOLM ONLY**



Order a unit with the iOLM application only

#### iOLM features value pack and options

In addition to the standard iOLM feature set, you can select added-value features as part of the **Advanced** packages or standalone options. Please refer to the [iOLM specification sheet](#) for the complete and most recent description of these features.

- iOLM Standard**
- Dynamic multipulse multiwavelength acquisition
  - Intelligent traces analysis and diagnostics
  - Single link view and event table
  - SOR trace generation
  - Single iOLM file per link for easy reporting
  - Unbalanced/tapered PON characterization and troubleshooting
  - **Optimode:** Short-link close events, fast short link, fast medium range

- iOLM Advanced (iADV)<sup>a</sup>**
- Real-time OTDR
  - SOR pulse and wavelength editor
  - SOR trace view
  - Custom elements
  - Advanced link edition and re-analysis
  - 2:N splitter characterization
  - **Optimode:** SFP-Safe Troubleshooting<sup>b</sup>, PON last-mile certification

- iLOOP<sup>a</sup>**
- iOLM loopback
  - iOLM automated bidirectional analysis over TestFlow<sup>b, c</sup>

- iCERT<sup>a</sup>**
- Cabling certification option

a. Require enabling iOLM standard.  
 b. Singlemode only, configuration without splitter.  
 c. Requires TestFlow subscription.





**TEST REPORTING AND AUTOMATION**

Consolidated data management and post-processing solutions designed to improve results quality as well as auditing and reporting productivity. From the essentials to advanced features, FastReporter covers all your optical measurement post-processing needs.

FEATURES	SOLUTION	
	Basic (included)	Full subscription or USB dongle
Number of files	Up to 24 results (unlimited for OTDRs)	Unlimited
Measurement type	OTDR, iOLM, FIP, OLTS, OPM, CD, PMD	
Results viewer	•	•
Reporting – Basic (PDF)	•	•
Reporting – Advanced (Excel, PDF, custom)		•
Basic analysis – Bidir (OTDR and iOLM)	•	•
Advanced editing		•
Automated validation and results correction		•
Job management and identification edition (Via TestFlow account)	One file at a time	Batch processing
Hundreds of additional features		•

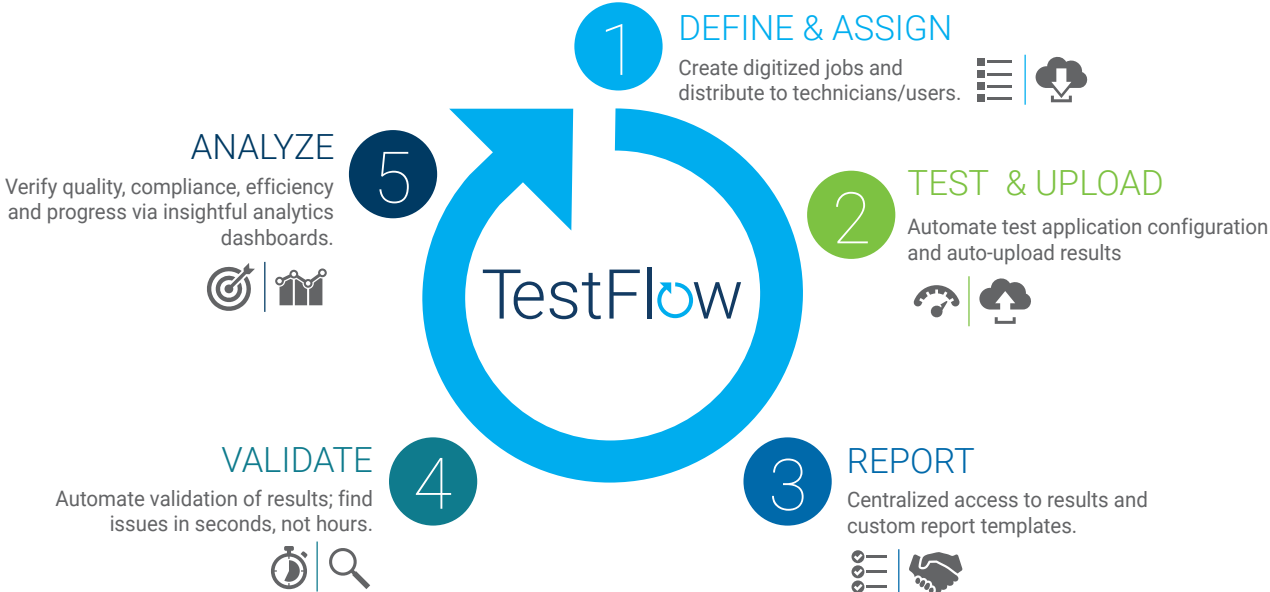


**CLOUD-BASED FIELD TEST MANAGEMENT – GET MORE FROM FastReporter WITH TestFlow**



**The TestFlow process**

Whether you are a field technician, a site lead or a project manager, you can benefit from TestFlow.



- ENSURE 100% COMPLIANCE
- RIGHT THE FIRST TIME
- AUTOMATE REPORTING AND BATCH AUDITING
- FASTER INVOICING AND DEPLOYMENTS
- INFORMED BUSINESS DECISIONS



## OPTICAL PLUG-AND-PLAY OPTIONS

The MaxTester features plug-and-play optical options that can be purchased whenever you need them: at the time of your order or later on. In either case, installation is a snap, and can be performed by the user without the need for any software update.

### Optical power meter

EXFO's high-level power meter (GeX) can measure up to 27 dBm, the highest in the industry. This is essential for hybrid fiber-coaxial (HFC) networks or high-power signals. If used with an auto-lambda/auto-switching compatible light source, the power meter automatically synchronizes on the same wavelength, thus avoiding any risk of mismatched measurement.

- Extensive range of connectors
- Auto-lambda and auto-switching
- Offers measurement storage and reporting
- Seven standard calibrated wavelengths

### Visual fault locator (VFL)

The plug-and-play VFL easily identifies breaks, bends, faulty connectors and splices, in addition to other causes of signal loss. This basic, yet essential troubleshooting tool should be part of every field technician's toolbox. The VFL visually locates and detects faults over distances of up to 5 km by creating a bright-red glow at the exact location of the fault on singlemode or multimode fibers (available with the optical power meter only).

## DISCOVER THE INDUSTRY'S FIRST FULLY AUTOMATED FIBER INSPECTION SCOPES

Housing a unique automatic focus adjustment system, EXFO's fiber inspection scope series automates each operation in the sequence of inspecting a connector endface. The result: **fiber inspection is now a quick, one-step process that can be performed by technicians of all skill levels.**

### Automated models

**The FIP-500:** wireless, autonomous and fully automated scope featuring the fastest inspection in the industry for both multi-fiber and single-fiber connectors. All-day testing without the need to recharge batteries or offload results.

**The FIP-435B:** connected to EXFO platforms or your smart device, this fully automated wireless scope enables connector certification in one step. View and store results on your EXFO platform or smart device.

**The FIP-430B:** fully automated inspection scope featuring USB wired connectivity to PC and EXFO platforms.

### Semi-automated and manual models

**The FIP-420B:** semi-automated scope featuring a manual focus adjustment. USB wired connectivity to PC and EXFO platforms.

**The FIP-410B:** basic inspection features for manual inspection. USB wired connectivity to PC and EXFO platforms.



FEATURES	USB WIRED			WIRELESS	AUTONOMOUS
	FIP-410B	FIP-420B	FIP-430B	FIP-435B	FIP-500
Image capture	•	•	•	•	•
Five-megapixel CMOS capturing device	•	•	•	•	•
Automatic fiber image-centering function and focus adjustment		•	•	•	•
Automatic fiber image-focus adjustment			•	•	•
On-board pass/fail analysis		•	•	•	•
Pass/fail LED indicator		•	•	•	•
USB connectivity to an EXFO platform or PC	•	•	•	•	
Wireless connectivity to an EXFO platform or PC				•	
Wireless connectivity to a smartphone				•	•
Semi-automated multifiber / MPO inspection	•	•	•	•	
Fully automated multifiber / MPO inspection					•
On-board touch screen and data storage					•
SmarTips with automated thresholds and quick-connect mechanism					•

SOFTWARE UTILITIES	
Software update	Ensure that your MaxTester is up-to-date with the latest software.
VNC configuration	The Virtual Network Computing (VNC) utility allows technicians to easily remote control the unit via a computer or laptop.
Microsoft Internet Explorer	Access the Web directly from your device interface.
Data mover	Transfer all your daily test results quickly and easily.
Centralized documentation	Instant access to user guides and other relevant documents.
Wallpapers	Enhance your work environment with colorful and scenic backgrounds.
PDF Reader	View your reports in PDF format.
Bluetooth file sharing	Share files between your MaxTester and any Bluetooth-enabled device.
WiFi connection	WiFi FIP inspection scope interface. Upload test results and browse the Internet.
Inspection scope	USB or WiFi scope to inspect and analyze connectors.
FTP server	Exchange files over WiFi to an FTP application on a smartphone for easier file sharing from the field.
Security management	Tamper-proof security profile with user password (permanent or renewable) and custom property message.

**PACKAGED FOR EFFICIENCY**

- 1 Singlemode OTDR port
- 2 Singlemode Live OTDR port
- 3 Stylus
- 4 Power meter
- 5 Visual fault locator
- 6 10/100 Mbit/s Ethernet port
- 7 Two USB 2.0 ports
- 8 AC adapter
- 9 Home/switch application and screen capture (hold)
- 10 Power on/off/stand by
- 11 Battery LED status
- 12 Built-in WiFi/Bluetooth
- 13 Stand support



SPECIFICATIONS<sup>a</sup>

TECHNICAL SPECIFICATIONS	
Display	7-in (178-mm) outdoor-enhanced touchscreen, 800 x 480 TFT
Interfaces	Two USB 2.0 ports RJ45 LAN 10/100 Mbit/s
Storage	2 GB internal memory (20 000 OTDR traces, typical)
Batteries	Rechargeable lithium-polymer battery 12 hours of operation as per Telcordia (Bellcore) TR-NWT-001138
Power supply	Power supply AC/DC adapter, input 100-240 VAC, 50-60 Hz
Wavelength (nm) <sup>b</sup>	1310 ± 20/1550 ± 20/1625 ± 10/1650 ± 5
SM live port built-in filter	1625 nm: highpass >1595 nm isolation >50 dB from 1270 nm to 1585 nm 1650 nm: bandpass 1650 nm ± 7 nm isolation >50 dB out of 1650 nm ± 10 nm
Dynamic range (dB) <sup>c</sup>	39/38/39/39
Event dead zone (m) <sup>d</sup>	0.5
Attenuation dead zone (m) <sup>e</sup>	2.5
PON dead zone (m) <sup>f</sup>	30
Distance range (km)	0.1 to 400
Pulse width (ns)	3 to 20 000
Linearity (dB/dB)	±0.03
Loss threshold (dB)	0.01
Loss resolution (dB)	0.001
Sampling resolution (m)	0.04 to 10
Sampling points	Up to 256 000
Distance uncertainty (m) <sup>g</sup>	±(0.75 + 0.0025 % x distance + sampling resolution)
Measurement time	User-defined
Reflectance accuracy (dB) <sup>b</sup>	±2
Typical real-time refresh (Hz)	4

TECHNICAL SPECIFICATIONS (in-line power meter) <sup>b, h</sup>	
Input power range (dBm)	1490 nm: -65 to 18 1550 or 1577 nm: -50 to 28
PON power meter (nm)	Two channels: 1490/1550
Broadband power meter (nm)	One channel: 1270 to 1625
Power uncertainty (dB) <sup>a</sup>	±0.2
Calibrated wavelengths (nm)	1310, 1490, 1550 and 1625
PON power meter spectral band (nm)	1450 to 1530
Broadband power meter spectral band (nm)	1270 to 1625
PON power meter selectable wavelengths (nm)	1490, 1550, 1490/1550
Broadband power meter selectable wavelengths (nm)	1270, 1290, 1310, 1330, 1350, 1370, 1390, 1410, 1430, 1450, 1470, 1490, 1510, 1530, 1550, 1570, 1577, 1590, 1610, 1625
Display resolution (dB)	0.1
PON power meter ORL (dB) <sup>a</sup>	-55
Broadband power meter ORL (dB) <sup>a</sup>	-50

a. All specifications valid at 23 °C ± 2 °C with an FC/APC connector, unless otherwise specified.

b. Typical.

c. Typical dynamic range with longest pulse and three-minute averaging at SNR = 1.

d. Typical, for reflectance from -35 dB to -55 dB, using a 3-ns pulse.

e. Typical, for reflectance at -55 dB (at 1310 nm), using a 3-ns pulse. Attenuation dead zone at 1310 nm is 3.5 m typical with reflectance below -45 dB.

f. Non-reflective FUT, non-reflective splitter, 13-dB loss, 50-ns pulse, typical value.

g. Does not include uncertainty due to fiber index.

h. Specifications valid when OTDR not functioning or in idle mode.

**GENERAL SPECIFICATIONS**

Size (H x W x D)	166 mm x 200 mm x 68 mm (6 9/16 in x 7 7/8 in x 2 3/4 in)
Weight (with battery)	1.5 kg (3.3 lb)
Temperature	Operating Storage
	-10 °C to 50 °C (14 °F to 122 °F) -40 °C to 70 °C (-40 °F to 158 °F) <sup>a</sup>
Relative humidity	0 % to 95 % non-condensing

**SOURCE**

Output power (dBm) <sup>b</sup>	-2.5
Modulation	CW, 330 Hz, 1 kHz, 2 kHz, 1 kHz + blink, 2 kHz + blink

**BUILT-IN POWER METER SPECIFICATIONS (GeX) (optional)<sup>c</sup>**

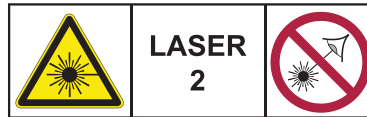
Calibrated wavelengths (nm)	850, 1300, 1310, 1490, 1550, 1625, 1650
Power range (dBm) <sup>d</sup>	27 to -50
Uncertainty (%) <sup>e</sup>	±5 % ± 10 nW
Display resolution (dB)	0.01 = max to -40 dBm 0.1 = -40 dBm to -50 dBm
Automatic offset nulling range <sup>d,f</sup>	Max power to -30 dBm
Tone detection (Hz)	270/330/1000/2000

**VISUAL FAULT LOCATOR (VFL) (optional)**

Laser, 650 nm ± 10 nm
CW/Modulate 1 Hz
Typical P <sub>out</sub> in 62.5/125 µm: > -1.5 dBm (0.7 mW)
Laser safety: Class 2

**LASER SAFETY (complies with FDA 1040.10 and IEC 60825-1:2014)**

With VFL:



Without VFL:

**ACCESSORIES (optional)**

GP-10-061	Soft carrying case	GP-2208	Spare stylus
GP-10-072	Semi-rigid carrying case	GP-2209	Spare battery
GP-10-100	Rigid carrying case	GP-2240	Utility glove
GP-1008	VFL adapter (2.50 mm to 1.25 mm)	GP-2242	Replacement hand strap
GP-2155	Carry-on size backpack	GP-2243	Spare AC/DC adapter (specify country power cord)
GP-2205	DC vehicle battery-charging adaptor (12 V)	GP-3115	Kickstand

a. -20 °C to 60 °C (-4 °F to 140 °F) with the battery pack.

b. Typical output power is given at 1550 nm.

c. At 23 °C ± 1 °C, 1550 nm and FC connector. With modules in idle mode. Battery operated after 20-minute warm-up.

d. Typical.

e. At calibration conditions.

f. For ±0.05 dB, from 10 °C to 30 °C.



## ORDERING INFORMATION

MAX-730C-XX-XX-XX-XX-XX-XX-XX-XX-XX-XX-XX-XX

**Optical configuration**

SM1 = SM OTDR, 1310/1550 nm  
 SM2 = SM OTDR, 1310/1550 nm and 1625 nm live<sup>a</sup>  
 SM3 = SM OTDR, 1310/1550/1625 nm  
 SM6 = SM OTDR, 1625 nm live  
 SM7 = SM OTDR, 1650 nm live  
 SM8 = SM OTDR, 1310/1550 nm and 1650 nm live<sup>a</sup>

**Base software**

OTDR = Enables OTDR application only  
 iOLM = Enables iOLM application only  
 Oi = Enables OTDR and iOLM applications

**Connector**

EA-EUI-28 = APC/DIN 47256  
 EA-EUI-89 = APC/FC narrow key  
 EA-EUI-91 = APC/SC  
 EA-EUI-95 = APC/E-2000  
 EA-EUI-98 = APC/LC  
 EI connectors = See section on next page

**OPM option**

00 = Without OPM Option  
 OPM = In-line power meter, one broadband channel<sup>b</sup>  
 OPM2 = In-line power meter, broadband mode or  
 PON power meter mode (dual band)<sup>b</sup>

**iOLM optional software packs**<sup>c</sup>

00 = iOLM Standard  
 iADV = iOLM Advanced

**Software options**

00 = Without additional software option  
 iLOOP = iOLM loopback mode<sup>c</sup>  
 iCERT = iOLM tier-2 certification<sup>c</sup>  
 PSWRD = Security management option

**Power meter**

00 = Without power meter  
 VFL = Visual fault locator (650 nm)  
 PM2X = Power meter; GeX detector  
 VPM2X = VFL and power meter; GeX detector

**Power meter connector adapter**

FOA-22 = FC/PC, FC/SPC, FC/UPC, FC/APC  
 FOA-32 = ST: ST/PC, ST/SPC, ST/UPC  
 FOA-54B = SC: SC/PC, SC/SPC, SC/UPC, SC/APC  
 FOA-96B = E-2000/APC  
 FOA-98 = LC  
 FOA-99 = MU

Example: MAX-730C-SM2-OI-EA-EUI-91-OPM2-iADV-VPM2X-FOA-54B-FR

**FastReporter software**

00 = Without software option  
 FR = FastReporter software

**WiFi and Bluetooth**

00 = Without RF components  
 RF = With RF capability (WiFi and Bluetooth)<sup>d,e</sup>

**Extra FIPT-400B tips<sup>f</sup>****Bulkhead tips**

FIPT-400-LC = LC tip for bulkhead adapters  
 FIPT-400-LC-APC = LC/APC tip for bulkhead adapter  
 FIPT-400-SC-APC = SC APC tip for bulkhead adapter<sup>h</sup>  
 FIPT-400-SC-UPC = SC UPC tip for bulkhead adapter

**Patchcord tips**

FIPT-400-U12M = Universal patchcord tip for 1.25 mm ferrules  
 FIPT-400-U12MA = Universal patchcord tip for 1.25 mm ferrules APC  
 FIPT-400-U25M = Universal patchcord tip for 2.5 mm ferrules<sup>g</sup>  
 FIPT-400-U25MA = Universal patchcord tip for 2.5 mm ferrules APC<sup>h</sup>

**Base tips<sup>j</sup>**

APC = Includes FIPT-400-U25MA and FIPT-400-SC-APC  
 UPC = Includes FIPT-400-U25M and FIPT-400-FC-SC

**Inspection scope model<sup>k</sup>**

00 = Without inspection probe  
 FP410B = Digital video inspection probe  
 Triple magnification  
 FP420B = Analysis digital video inspection probe  
 Automated pass/fail analysis  
 Triple magnification  
 Autocentering  
 FP425B = Wireless digital video inspection probe<sup>e</sup>  
 Automated pass/fail analysis  
 Triple magnification  
 Autocentering  
 FP430B = Automated analysis digital video inspection probe  
 Automated focus  
 Automated pass/fail analysis  
 Triple magnification  
 Autocentering  
 FP435B = Wireless analysis digital video inspection probe<sup>e</sup>  
 Automated focus  
 Automated pass/fail analysis  
 Triple magnification  
 Autocentering

a. The two ports are configured with the same adapter.

b. Available with SM2/SM6/SM7 and SM8 models

c. Please refer to the [iOLM specification sheet](#) for the complete and most recent description of these value packs. Only available if iOLM or Oi base software option is selected.

d. Not available in China.

e. Included with FP435B scope options.

f. This list represents a selection of fiber inspection tips that covers the most common connectors and applications but does not reflect all the tips available. EXFO offers a wide range of inspection tips, bulkhead adaptors and kits to cover many more connector types and different applications. Please contact your local EXFO sales representative or visit [www.EXFO.com/FIPTips](http://www.EXFO.com/FIPTips) for more information.

g. Included when UPC base tips are selected.

h. Included when APC base tips are selected.

i. Includes a bulkhead adapter for patch cord inspection.

j. Available if inspection scope is selected.

k. Includes ConnectorMax2 software.

## EI CONNECTORS



To maximize the performance of your OTDR, EXFO recommends using APC connectors on singlemode port. These connectors generate lower reflectance, which is a critical parameter that affects performance, particularly in dead zones. APC connectors provide better performance than UPC connectors, thereby improving testing efficiency.

For best results, APC connectors are mandatory with the iOLM application.

Note: UPC connectors are also available. Simply replace EA-XX by EI-XX in the ordering part number. Additional connector available: EI-EUI-90 (UPC/ST).

# 4TECT

ООО «4TECT»

Телефон: +7 (499) 685-4444

info@4test.ru

[www.4test.ru](http://www.4test.ru)